

# SUPER STARDUST

## SERVE OVER COUNTERS



Independently tested by Refrigeration Developments and Testing Ltd. and on the ECA list for 100% capital allowances.

- Stainless steel constructed display suitable for butchers and delicatessen.
- Flat glass option at the same cost.
- All cases are made to order and can therefore be any depth and length.
- Remote refrigeration available - using low noise, energy efficient modern condensing units.

## GLASS STYLES

### FLAT GLASS



*Flat glass with chunky round posts*

### ANGLED GLASS



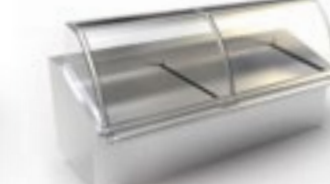
*Flat glass with chunky round posts sloped 10°*

### STANDARD CURVED GLASS



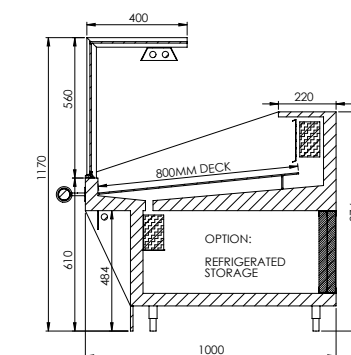
*The standard glass curves up and over the canopy to form a small top shelf*

### RADICAL GLASS SINGLE CURVE



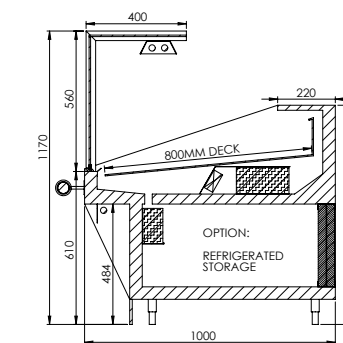
*The radical curved glass has a single curve and a separate flat top glass shelf*

## METHODS OF REFRIGERATION



### Static Cooled

Very energy efficient, the static cooled deck is perfect for displaying a wide range of products. It is particularly ideal for fresh meat as there are no fans which tend to draw moisture from the product.



### Blown Air

Using fans to push the cold air around the cabinet, the blown air display gives the user a taller product load height and a more even temperature across the deck. Great for deli produce where moisture loss is less of an issue. Please note that blown air is not suitable for wet fish.

## SPECIFICATION

- 1000mm overall depth, 800mm display deck
- All 304 spec stainless steel construction
- Choice of brushed or mirror stainless steel construction.
- LED meat/deli lights as standard
- Stainless steel rail to front
- Flat or curved glass - same price
- Stainless wire grids to the static cooled model
- Front finish either stainless steel or a laminate of the customers choice
- Front skirt underlighting
- Inset sockets to the rear
- Till/scale platforms and bag holders as required (see image)
- Feet or Castors - same price

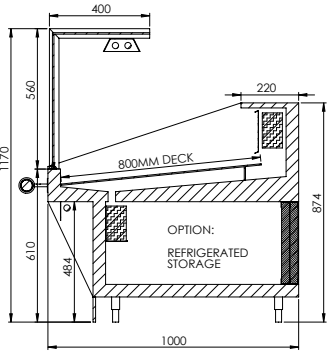
### OPTIONAL EXTRAS

- Granite or Corian backshelf
- Base to be tiled or painted any RAL Colour
- Remote condensing units

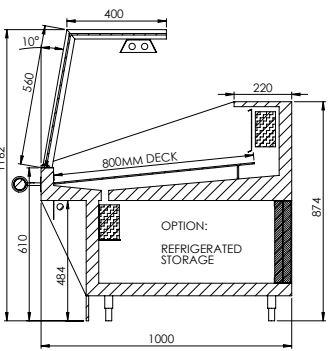




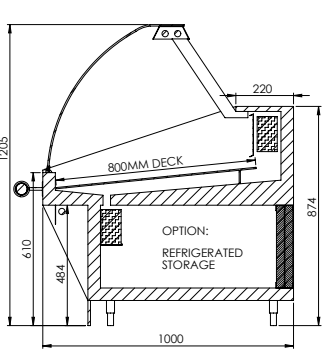
STANDARD CROSS SECTIONS



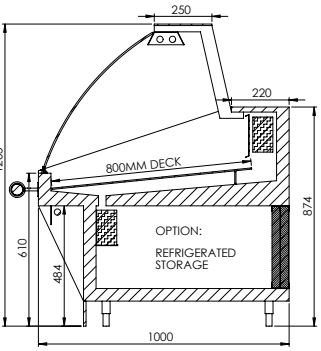
Flat Glass  
*(Any length & angle)*



10° Angled Flat Glass  
*(Any length & angle)*

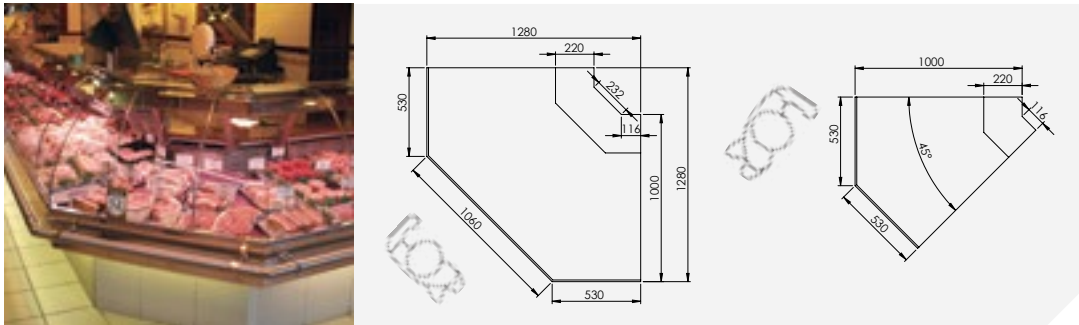


Standard Curve

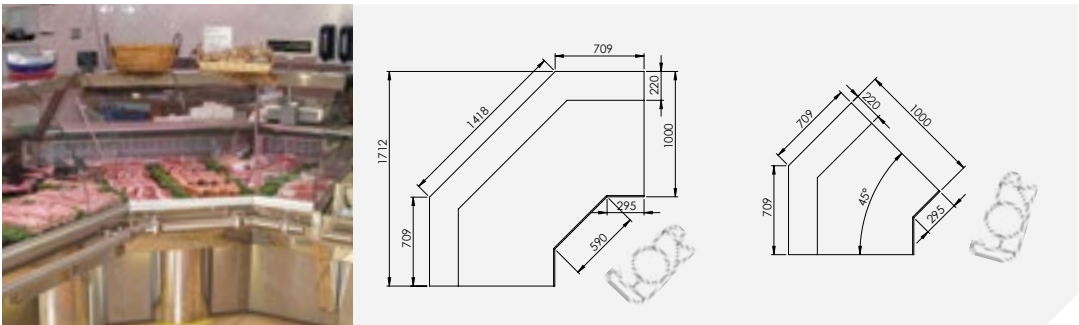


Radical Curve

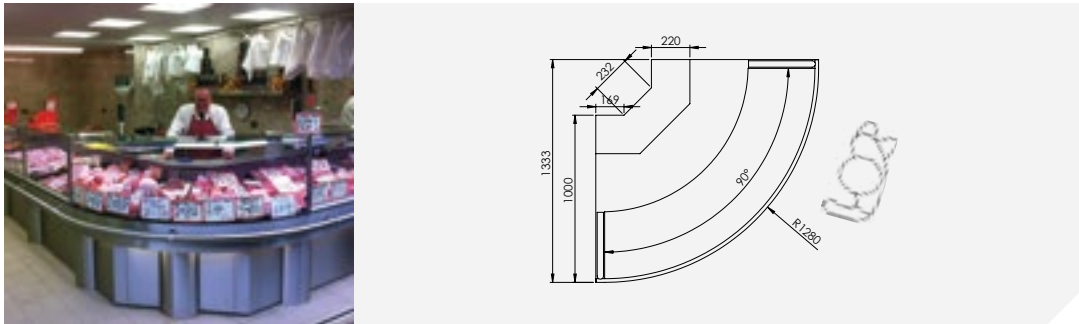
STANDARD GLASS CORNERS PLAN VIEW



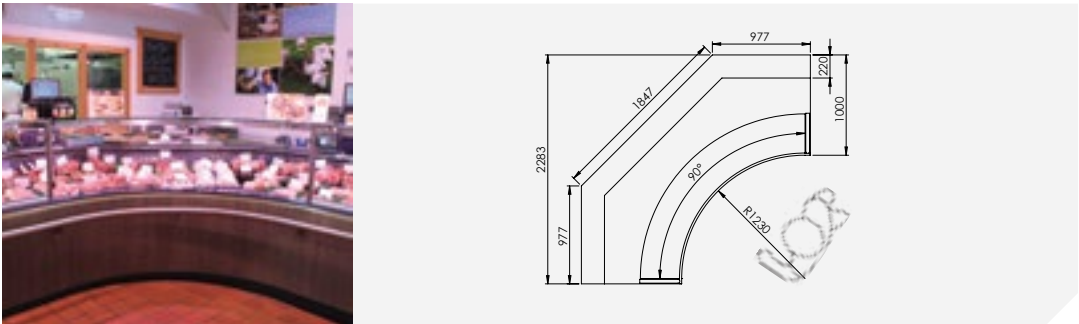
Standard Curve: External Corner  
*As well as standard toughened glass corners, we can make any size and angle of corner to order using non-tempered sections of curved glass.*



Standard Curve: Internal Corner



Vertical Curve: External Corner



Vertical Curve: Internal Corner

 - Indicates Customer Side

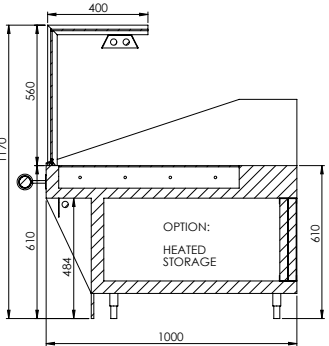
HEATED



Heated sections can be constructed as part of a run of counter with a fixed insulated mirror divider between the hot and the cold sections, or as a free standing display.

Each heated display can be used for hot chickens or any other hot product. Please specify and XL will advise you on the most suitable specification for your requirements.

- Flat hot plate or gastronorm containers.
- Option of rear sliding doors.
- With or without optional water bath to provide extra humidity.
- Carvery pads as required.
- All other options / specifications as the standard refrigerated displays.
- Large sizes P.O.A.



Heated Cross Section  
*(Available in all glass styles)*



| Super Stardust Serve Over Display |        |        |        |        |        |        |         |         |        |         |
|-----------------------------------|--------|--------|--------|--------|--------|--------|---------|---------|--------|---------|
| Model                             | 3      | 4      | 5      | 6      | 7      | 8      | 9       | 10      | 11     | 12      |
| Actual Length (inch)              | 37 3/8 | 49 3/4 | 61 1/4 | 70 7/8 | 83 1/2 | 96 1/8 | 106 1/2 | 117 1/4 | 130    | 142 1/2 |
| Actual Length (mm)                | 949    | 1262   | 1530   | 1800   | 2120   | 2440   | 2705    | 2975    | 3300   | 3620    |
| Option of Refrigerated Storage    | N/A    | N/A    | £1,075 | £1,312 | £1,334 | £1,430 | £1,557  | £1,758  | £1,834 | £1,933  |
| Heated                            | £4,400 | £5,279 | £5,473 | -      | -      | -      | -       | -       | -      | -       |

*For a 1100mm overall case with a 900mm deck add 10% to the prices above.*